



STARHOTELS®

# Du Parc

PARMA

# W

elcome to The Golden Age of Travel. The Du Parc is rich in Art Nouveau influences, from the modern façade with its large windows and striking symmetry to the classic interior with its Liberty-style fabrics and original antiques. Close to the old town, with direct access to the expansive Parco Ducale, the Du Parc is more than just a pretty face. There are ten meeting rooms, with capacity for 600 delegates and two renowned restaurants: Canova and Aiglon. Whether business, pleasure, or a bit of both, it's an experience to savor.

Viale Piacenza, 12/c  
43100 Parma - ITALY  
T +39 0521 292929  
F +39 0521 292828  
[duparc.pr@starhotels.it](mailto:duparc.pr@starhotels.it)  
[starhotels.com](http://starhotels.com)

### **Rooms & Suites**

Liberty-style lines, abstract patterns and tapestry, sumptuous fabrics and furnishings, our 169 rooms and suites seamlessly blend the classic and the contemporary.

### **Restaurant & Bar**

Sample two of the city's finest restaurants: Canova and Aiglou. The Canova features sublime regional and seasonal cuisine, as well as international favorites. The Aiglou can seat up to 200 diners for a spectacular banquet.

### **Services**

Everything the modern traveler needs to relax and recharge – from concierge and laundry to garage, parking, Wi-Fi and a fitness center.

### **Meetings & Events**

We have ten luxurious conference rooms for up to 600 people, all equipped with the latest technology and supported by an experienced events team. We specialize in delivering events with flair.







### Location

You'll find our hotel in a great location in central Parma, with all of the city's must-see sights and hidden treasures within your reach. A small bridge separates the hotel from the grand Parco Ducale, through which it's just a short stroll to the historical heart of Parma. Discover artistic masterpieces at the National Gallery, or dramatic displays at the Farnese Theater. Then seek out the city's renowned food in the many delicious delis and bustling cafés.



### From the station

- From the Parma central train station (800metres away).

### From the highway

- From the A1 Milano/Roma highway (5km), take the Parma exit.
- From the A15 Parma/La Spezia highway (8km), take the Parma Ovest exit.

### From the airport

- From Giuseppe Verdi airport (3km away).

### From the Fiera

- From the Fiera (Fairgrounds) (4km away).



## 10 meeting rooms

All meeting rooms are equipped with: Wi-Fi (at a charge), sound system, screen, LCD projector<sup>(1)</sup>, flip chart, other services are available upon request.

<sup>(1)</sup>Max one LCD projector complimentary, additional requests at a charge



Meeting rooms	Area mq / ft.	L x W mt. / ft.	Height mt. / ft.	Theatre	Class room	Conference table/ U-shape	Cabaret style <sup>^</sup>	Cocktail reception	Banquet
Verdi (A)	336 3615,36	14,00x24,00 45,93x78,74	3,6 11,81	300	120	75	108	350	250
Bodoni (B)	91 979,16	10,00x9,10 32,81x29,86	4,2 13,78	70	40	30	24	90	40
Farnese (C)	91 979,16	10,00x9,10 32,81x29,86	4,2 13,78	70	40	30	24	90	40
(A+B+C)	564 6070,82	23,50x24,00 77,10x78,74	3,6-4,20 11,81-13,78	600	250	140	210	500	450
Toscanini	44 473,44	8,00x5,50 26,25x18,04	3,5 11,48	35	10	15	12	-	-
Maria Luigia <sup>°</sup>	82 882,32	11,00x7,50 36,09x24,61	3,2 10,5	45	25	20	24	50	-
Stendhal <sup>°</sup>	60 645,83	6,50x9,20 21,33x30,18	2,7 8,86	35	18	18	12	-	-
Rossini <sup>°</sup>	76 818,05	12,80x6,00 41,99x19,68	2,7 8,86	45	25	20	18	50	-
Puccini <sup>°</sup>	84 904,16	14,00x6,00 45,93x19,68	2,7 8,86	65	30	25	24	-	-
Donizetti	46 494,96	8,50x5,50 27,89x18,04	2,7 8,86	35	15	15	12	-	-
Foyer Congressi	120 1291,2	10,00x12,00 32,81x39,37	-	-	-	-	-	120	-
La Piazzetta	115 1237,84	10,50x11,00 34,44x36,08	-	-	-	-	-	110	-
Aiglon + Parmigianino + Canova + Balconate	570 6135,4	22,00x26,00 72,18x85,30	-	-	-	-	-	-	-
Canova Restaurant <sup>°</sup>	63 677,88	7,00x9,00 22,97x29,53	-	-	-	-	-	-	50
Aiglon Restaurant	208 2238,92	17,30x12,00 56,74x39,36	-	-	-	-	-	250	180
Parmigianino	63 677,88	7,00x9,00 22,97x29,53	-	-	-	-	-	-	50

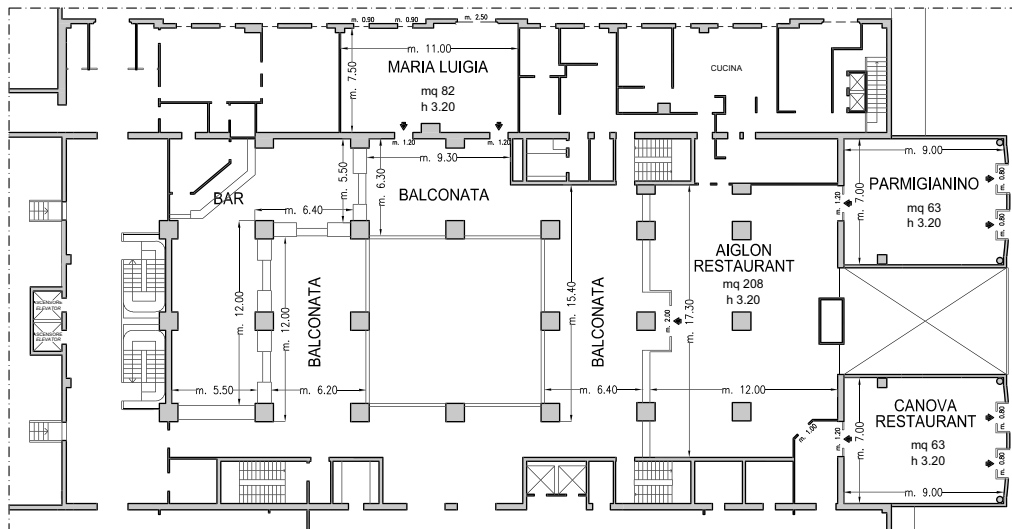
<sup>°</sup> Daylight

<sup>^</sup> Cabaret style: Diameter tables cm 180, up to 6 pax each

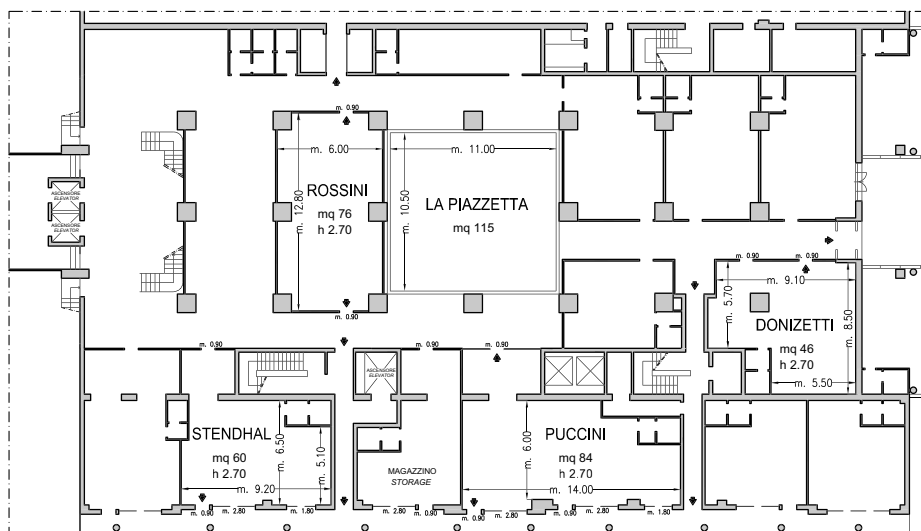
STARHOTELS<sup>®</sup>

Du Parc  
PARMA

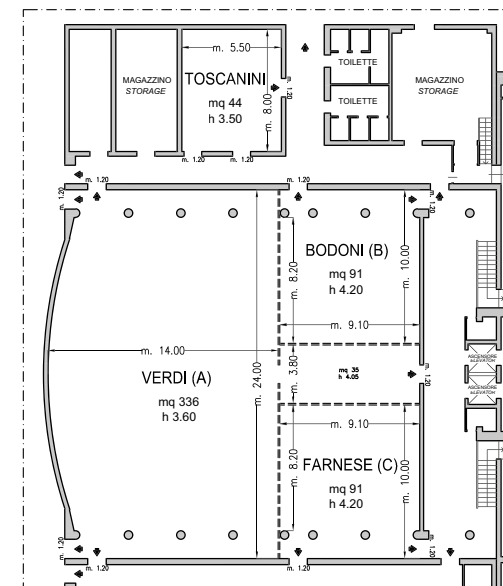
Viale Piacenza, 12/c  
43100 Parma - ITALY  
T +39 0521 292929 - F +39 0521 292828  
meeting.duparc.pr@starhotels.it starhotels.com



Piano Terra / Ground Floor



Piano -1 / Basement



Piano -2 / Floor -2

- Uscite di sicurezza / Emergency Exits
- Finestre / Windows
- ===== Pareti mobili / Modular Walls
- Colonne / Columns

10 meeting room fino a 600 persone/ 10 meeting rooms up to 600 seats

STARHOTELS®

Du Parc  
PARMA

Viale Piacenza, 12/c  
43100 Parma - ITALY  
T +39 0521 292929 - F +39 0521 292828  
meeting.duparc.pr@starhotels.it starhotels.com